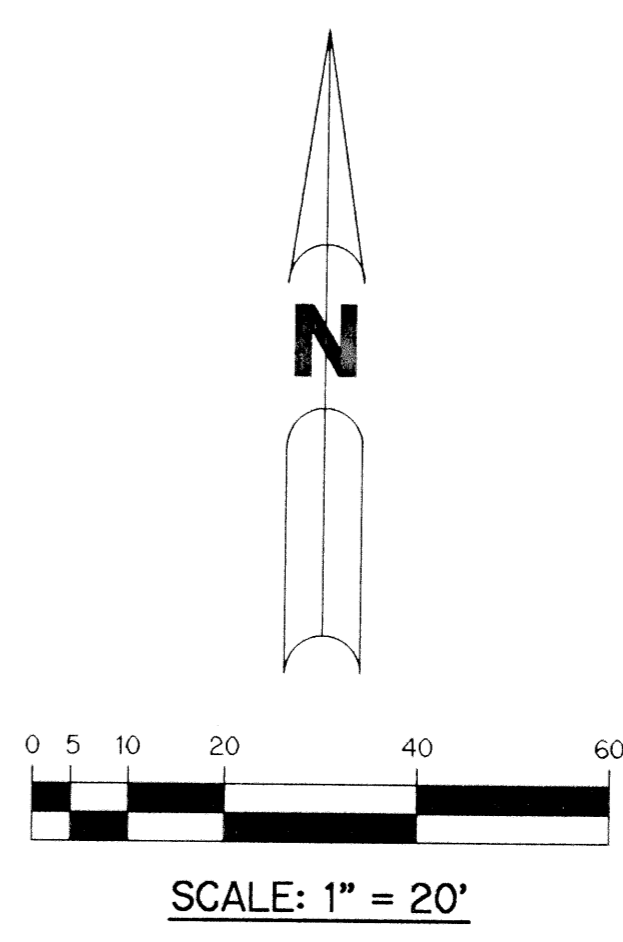
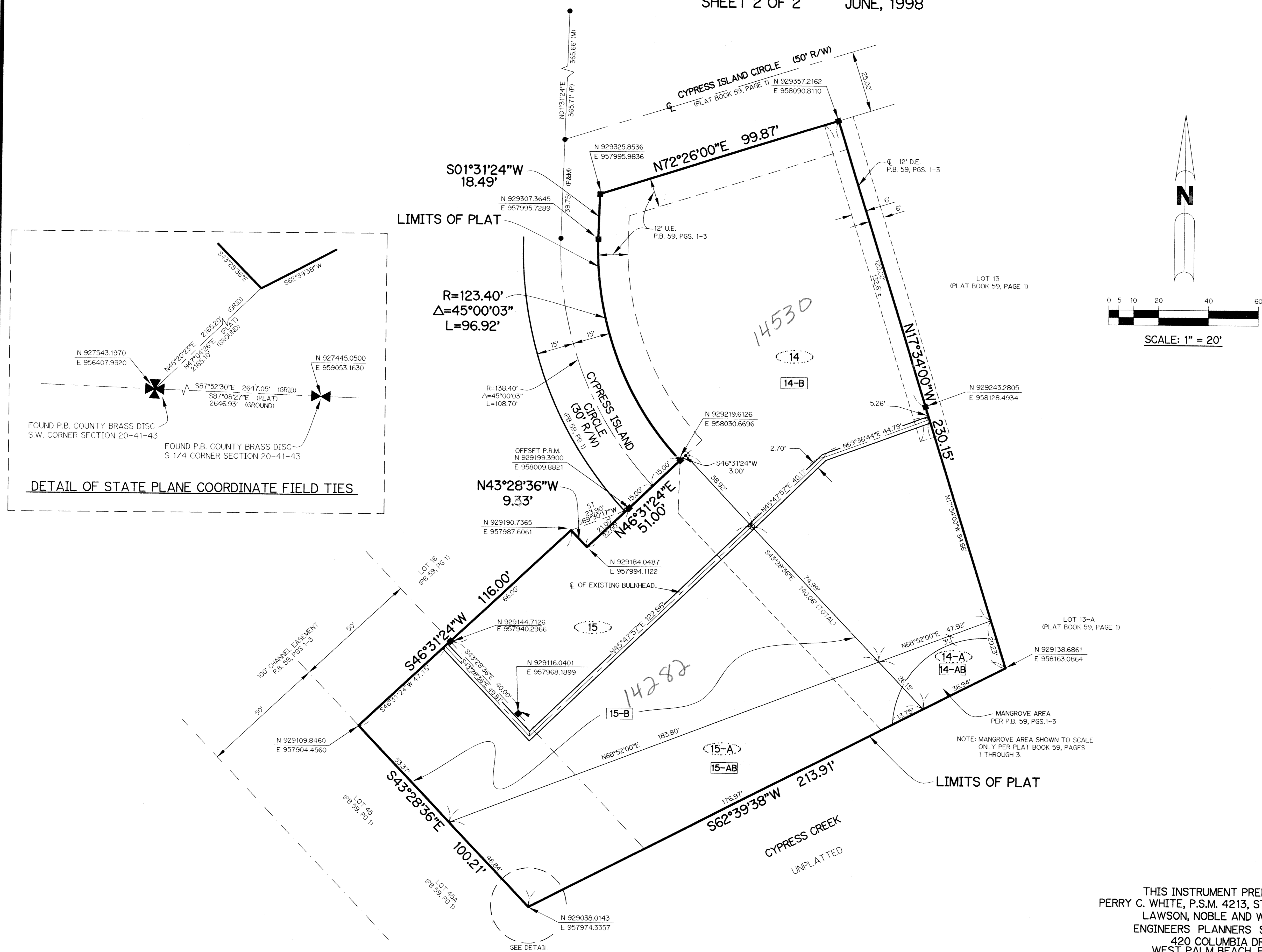


# CYPRESS ISLAND - REPLAT LOTS 14 & 15

BEING A REPLAT OF LOTS 14 & 15, CYPRESS ISLAND  
AS RECORDED IN PLAT BOOK 59, PAGES 1, 2, AND 3  
PUBLIC RECORDS OF PALM BEACH COUNTY, FLORIDA  
AND LYING IN SECTION 20, TOWNSHIP 41 SOUTH, RANGE 43 EAST.  
PALM BEACH COUNTY, FLORIDA.  
SHEET 2 OF 2 JUNE, 1998



**LEGEND:**

- - SET PERMANENT REFERENCE MONUMENT, PSM #4213
- - FOUND PERMANENT CONTROL POINT STRADDLERS
- △ - DELTA ANGLE
- BT - BUFFER TRACT
- ⊕ - CENTERLINE
- D.B. - DEED BOOK
- D.E. - DRAINAGE EASEMENT
- D.W.E. - DRIVEWAY EASEMENT
- L - ARC LENGTH
- L.A.E. - LIMITED ACCESS EASEMENT
- L.M.A.E. - LAKE MAINTENANCE ACCESS EASEMENT
- L.M.E. - LAKE MAINTENANCE EASEMENT
- N.R. - NOT RADIAL
- N.T.S. - NOT TO SCALE
- OS - OPEN SPACE TRACT
- O.R.B. - OFFICIAL RECORD BOOK
- PA - PEDESTRIAN ACCESS TRACT
- P.B. - PLAT BOOK
- PGS. - PAGES
- P.S.M. - PROFESSIONAL SURVEYOR AND MAPPER
- R - RADIUS
- R/W - RIGHT-OF-WAY
- S.T. - SURVEY TIE
- U.E. - UTILITY EASEMENT
- N 737648.0171 E 905258.2326 - DENOTES STATE PLANE COORDINATES
- 14 - LOT NUMBER PER P.B. 59, PGS. 1-3
- (P) - DIMENSION PER P.B. 59, PGS. 1-3
- (M) - MEASURED DIMENSION
- ⊗ - FOUND "X" CUT IN SEAWALL / SET PK NAIL WITH DISC LB6674
- ⊙ - FOUND 5/8" IRON ROD WITH CAP LB 4165

**NOTE:**

COORDINATES SHOWN ARE GRID COORDINATES  
 DATUM = NAD 83 (1990 ADJUSTMENT)  
 ZONE = FLORIDA EAST ZONE  
 LINEAR UNIT = U.S. SURVEY FEET  
 COORDINATE SYSTEM 1983 STATE PLANE  
 TRANSVERSE MERCATOR PROJECTION  
 ALL DISTANCES ARE GROUND  
 SCALE FACTOR = 1.00004546  
 N 62°39'38" E (PLAT BEARING)  
 N 61°51'35" E (GRID BEARING)  
 00°44'03" = BEARING ROTATION - COUNTER CLOCKWISE (PLAT TO GRID)

SUBDIVISION 11K replat lot 14 & 15  
 BOOK 54  
 FLOOD MAP # 1117B  
 ZONING RS/ISE  
 QUID # 12  
 SE 80-S4  
 TAZ 471  
 PID NAME Cypress Island

THIS INSTRUMENT PREPARED BY  
 PERRY C. WHITE, P.S.M. 4213, STATE OF FLORIDA  
 LAWSON, NOBLE AND WEBB, INC.  
 ENGINEERS PLANNERS SURVEYORS  
 420 COLUMBIA DRIVE  
 WEST PALM BEACH, FLORIDA  
 LB 6674